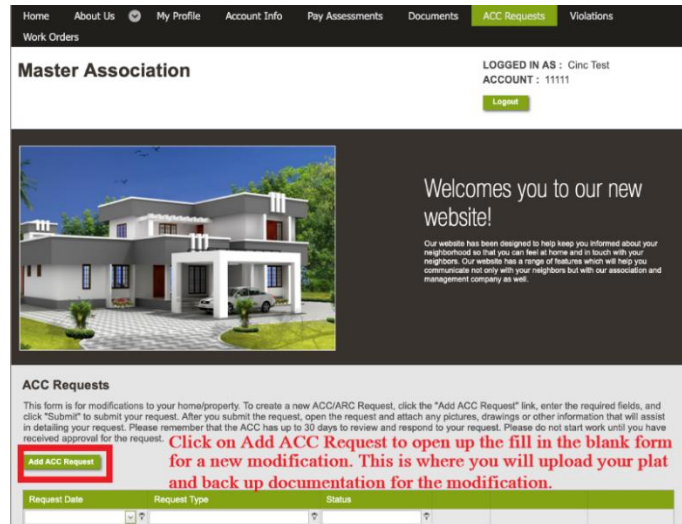
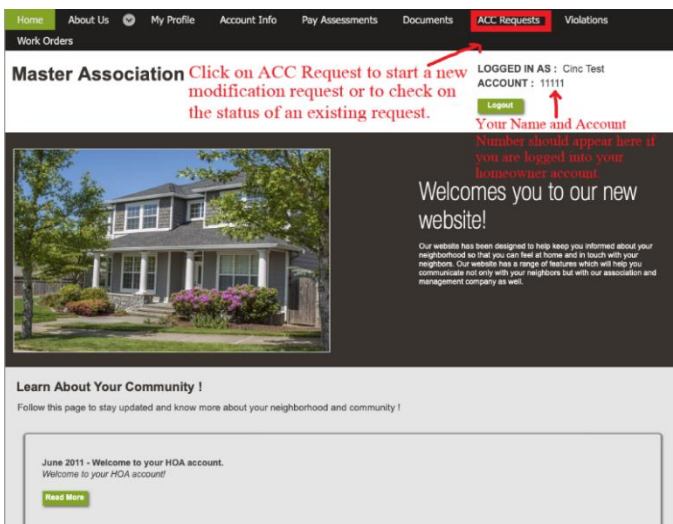


# River Trace HOA

## Fence and Trash Can Enclosure Guidelines

1. All Fence and Trash Can Enclosures additions **must** be approved by the Architectural Review Committee (ARC) prior to being installed
2. Check your communities Conditions, Covenants and Restrictions (CC&Rs) for rules and regulations.
3. Applications for Modification are available when you log into your homeowner account at [www.atlantacommunityservices.com](http://www.atlantacommunityservices.com) . **Please use the form that is available after you log into your homeowner account.**



4. Requirements for Fencing
  - a. Must be 6' in height for privacy fencing
  - b. Must be one of the approved styles
  - c. Must be set on the side and rear property lines
  - d. May not be closer to the street than the rear one-third of the residence located on the lot. Additional restrictions may apply to corner lots
  - e. Must be installed by a commercial contractor (not owner)
5. Trash can enclosures
  - a. May be 4' or 6' in height
  - b. Style must be the same as an approved fence color and style
  - c. Location permitted on driveway side of home and must sit at least 3' off the front corner
6. **Must be installed by a licensed and insured contractor.**

**\*\*\* If you are submitting multiple modifications, each request must be submitted on a separate form.**

---

### **Approved Perimeter Fence Styles:**

Charleston Shadow Box - 6 ft.



Dog Eared Shadow Box – 6 ft.



### **Approved Perimeter Fence Stains:**

All fences must be coated with at least two coats of stain when staining new wood. Both sides of fence must be stained. One coat may be used if re-staining already stained wood, with the same color, given the wood is in good shape and the stain is not severely weathered otherwise two coats are required. When staining with a different color, two coats are required. All fences must be stained within three months of fence install; this allows for the wood to dry before staining; alternate timeframes will be approved on a case by case basis by the ARC. The following stains are the only approved colors for use within your community:

**Brand and Line:** Sherwin Williams Exterior Staining

**Color:** Buckthorn

**Type:** Semi-Solid

**Notes:** Color code = SW 3003



**Brand and Line:** Sherwin Williams Exterior Staining

**Color:** Caribou

**Type:** Semi-Solid

**Notes:** Color code = SW 3025



**Brand and Line:** Sherwin Williams Exterior Staining

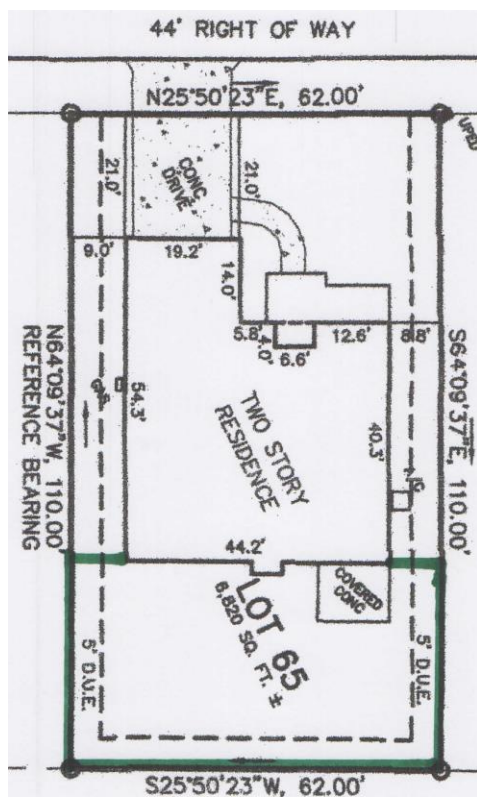
**Color:** Smoke Tree

**Type:** Semi-Solid

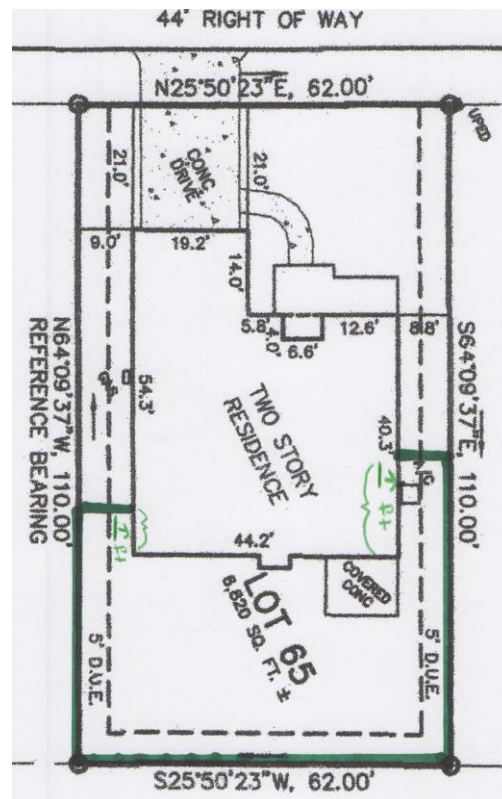
**Notes:** Color code = SW 3019



### Examples of Plat to submit for Perimeter Fence Placement



or



When submitting your request, you need to draw the proposed location for installation on the plat. If coming up the side of the home, you will need to include the measurement as depicted in illustration above.